

SUMMER 2022

WORKING TO PREVENT, REDUCE AND END YOUTH HOMELESSNESS



OUR PHILOSOPHY

At Wyndham House, we understand that housing means far more than a roof overhead or a place to eat a meal. For us, it means a space where youth are empowered to develop skills, make impactful decisions, contribute to their community, forge their identity and ultimately reach their full potential.

To foster this philosophy, Wyndham House offers a variety of programs that ensure all youth, regardless of where they are at in life, are given the opportunity to make healthy decisions and bring greater stability to their lives.

HOMELESSNESS PREVENTION TO EMERGENCY SERVICES include:



Two, 8-bed Youth Supportive Housing Residences



16-bed Youth Emergency Shelter



Concurrent Specialized Youth Hub



New Way Section 23 Classroom



Youth Outreach Program



Youth In Transition Program

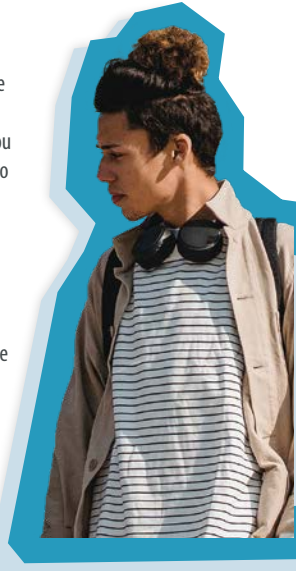


Housing Stability Program

Imagine along with me if you will...

You are 17 years old and have been chronically homeless for almost 2 years now. You can't live at home because home is just not a safe place... your parents are struggling to keep stable employment; one parent has a serious addiction issue and family violence has become a normal part of 'family life' for you since you were 5 years old. You have tried couch surfing at friends' homes, made some new friends who offered you a place to stay but that ended in direct exposure to harsh street life, drug use, criminal involvement and sometimes jail. Once out of custody the cycle begins again, more drug use to find comfort and reprieve from feelings of loneliness and anxiety and what is very likely the first onset of serious mental health issues.

Due to the years of instability in your life you can't remember the last time you attended school, saw a doctor, or went to a dentist. Although you are really trying your best to make it through life and survive each day, you lose hope for a future as things never seem to get better. You have by now burned a lot of bridges with friends, and family, lost touch with childhood friends and grandparents won't even take your calls anymore due to what they see as 'poor life decisions'. You really don't know what is next, but you know you need something. If you are a youth, in this community, you really have limited options... but what you need is a 'safe place to call home and find stability and hope for your future.'



From the desk of the Executive Director

Just recently I was listening to the radio and heard Warsan Shire read her poem 'Home'. The poem describes the journey of refugees in search of safety, shelter and a better life and I was struck by the first line; "No one leaves home unless home is the mouth of a shark".

To me this one line perfectly sums up how youth find themselves homeless and in crisis. In 17 years at Wyndham House, I have never known a young person to just simply decide that living alone on the street would be a good choice. No one leaves a safe and loving home. Home indeed has been the mouth of a shark for the youth living within our programs.

I will confess that at times I can feel defeated with the concept that the youth homeless sector seems to simply exist to catch the many youth that fall through the cracks of larger service systems and that if we could simply have systems that work in the way they should, youth shelters and supportive housing programs might not be needed. That I suppose is my dream, but the reality is that we are needed and those larger systems that were already under pressures prior to the pandemic are straining even more to meet the increased need and thus so are we here at Wyndham House. The demand for our services has never slowed during the pandemic, in fact it has only increased in the last few years and the complex issues that youth present with have also increased.

This has been yet another year where we celebrate the staff who make Wyndham House a sector leader in youth services. Over this past year, staff and clients have the supports and services they need to move beyond their current circumstances in the best possible way. In many ways this has been a transformational year for our agency... We are going to begin to start planning our agency's 50th anniversary, we have broken ground on our Youth-Focused Supportive Housing program (Bellevue Project), and we just announced \$1,054,138 in new funding for our Wyndham House Concurrent Specialized Youth Hub! This new funding, provided by the Substance Use and Addictions Program will enhance our Hub services in new and exciting ways. This expansion will allow highly complex youth with the greatest depth of need in our community to get immediate access to complex and concurrent-capable team-based care under one roof. With this expansion, we will be able to provide wrap around mental health treatment, assessment, primary care, nursing, psychiatry, peer support, case management, family support and more. Exciting times for Wyndham House.

So, while I can continue to dream of a time when our services are no longer needed, I take comfort in knowing that if youth in our community do find themselves looking for a safe place to call home, they can access the supports and services they need to stay housed, connected and well in this community.

Respectfully,

Debbie Bentley-Lauzon
EXECUTIVE DIRECTOR

MAILING ADDRESS: P.O. BOX 1898 Stn. Main Guelph, ON N1H 7A1 | **YOUTH EMERGENCY SHELTER:** 18 Norwich Street East (519) 837-3892 | **YOUTH HUB:** 133 Woolwich Street (519) 822-2768

(519) 822-4400 admin@wyndhamhouse.org wyndhamhouse.org @Wyndhamhouseguelph @Wyndhamhouseguelph @GuelphWyndhamHouse

Why we support Wyndham House



Paramount Ski & Sports

Paramount Ski & Sports recently held an 'in-store winter coat drive' ensuring each of our youth received a new coat to keep warm this past winter. Thank you, what a successful drive it was. Pictured: Lee & Grant (Paramount), Debbie Bentley-Lauzon (Executive Director), Aaron Zuccola (Board Member).



Legacy

A group of men called Legacy, which works to help men to become better fathers, partners and more active members of the community, recently dedicated an evening to volunteer to prep and prepare lasagnas for our youth to enjoy across all 3 housing sites. Thank you all for "Cooking their Day."



Take Time Vintage Market

Thank you "Take Time Vintage Market" for supporting our youth at-risk with the donation of your market entrance fee.



Riot Axe Players Tournament

Our Program Director Kristen was so pleased to accept a donation cheque from the Riot Axe Charity Players Tournament recently. Thank-you to all Staff and Players for your generosity.



Project Serve

Special Thanks to a group of students from Project Serve, UOG who worked so hard to brighten up the front and back yards at our Suffolk home recently. The vegetable garden and flower beds look amazing!



Big Funding News for the Youth Hub!

On July 25th, the Minister of Mental Health and Addictions and Associate Minister of Health Carolyn Bennett and Member of Parliament Lloyd Longfield announced over \$2.9 million in funding for five community-led projects across Guelph that will support those disproportionately affected by substance use issues or who face barriers accessing services, including youth, Indigenous Peoples, and 2SLGBTQIA+ individuals by increasing safer supply program capacity and improving outreach services.

The announcement was broadcasted from The Hub and hosted by Kristen Cairney, our Program Director. Wyndham House's Concurrent Specialized Youth Hub is most grateful to one of the recipients to receive funding and the expansion of The Hub will allow youth in need in our community will get immediate access to complex and concurrent-capable-team-based care all under one roof.



Profile of clients accessing services at the Youth Hub:

- 72% had diagnosed mental illness + substance abuse disorder. The other 28% struggled with problematic substance use in combination with significant health concerns.
- The primary presenting concerns were depression and anxiety, history of trauma and substance abuse.
- 100% of clients who access clinical support from the hub did not have a mental health clinician at the time of admission to the service.



Thank you to our Supporters

Wellington County Social Services, United Way Guelph Wellington Dufferin, Ministry of Children; Community and Social Services, City of Guelph, The Home Depot Foundation, Guelph Community Foundation, Rotary Clubs of Guelph, Local Food Infrastructure Fund, Robert Pavlis, Mactaggart Family Fund, Enbridge Gas Inc, T. Beattie Holding Inc, Doug Dane Consulting, Alectra Utilities, Tom Lammer, Picton Mahoney Asset Management, Lauren Watt, St. Andrew's Presbyterian Church, SV Law, Alliance Roofing & Sheet Metal Ltd, Bruce Kirby, Laura Broekema, Catherine Smith, Judy Eising, Guelph Red Chevrons, ACL Steel, Bill Rose, Eric & Pauline Stern. **Thank you to all Supporters, Monthly Donors, Donation In-Kind Donors, Volunteers, our Planning Committee and Board of Directors.**

NEWS UPDATES

WHAT'S HAPPENING AT WYNNDHAM HOUSE

New Program Highlight:

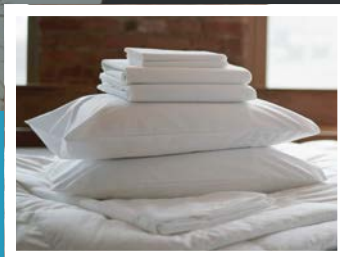


Blanket Our Youth

BEDDING KIT DRIVE

Everyone needs a welcoming bed at the end of each day. Youth experiencing homelessness need a warm bed for the night, not simply just a place to lay down and sleep.

It's easy to underestimate the importance of a pillow, bed sheets and a blanket. Good bedding is essential in providing warmth, comfort and security.



Here's how you can help:

DONATE to support our new "Blanket our Youth" Bedding Kit Drive to help us reach our goal of 100 new bedding kits by the end of September.

30 bedding kits have arrived, 70 kits to go... we can do this Guelph!

New pillows, sheet sets; blankets and comforters; twin, double, especially desired!

HELP US REACH
OUR GOAL OF

100

BEDDING KITS!



The Bellevue Project has begun!

We are thrilled to announce that after years of dreaming, the work on our Bellevue Project is now a reality! Plans for the expanded renovation have been finalized, permits obtained and construction began on May 1st, 2022. The back of the house has now been demolished and will be replaced with 8 independent bachelor-type units, each with its own private washroom, sleeping & sitting areas.

The design also includes shared common spaces and a large new communal kitchen with dining room. This newly enhanced building will also have open common areas for recreation, celebrations, and holidays as well as thoughtfully designed spaces for healthcare, private meeting rooms and staff offices. Youth focused support services will be available on-site 24 hours-a-day, seven days-a-week.

The trauma of homelessness causes negative social, emotional, and health consequences for young people. By adding private bedrooms and bathrooms and restoring a sense of privacy, dignity, and normalcy to the lives of the youth we serve, we expect better physical and



mental health outcomes as youth work through the traumatic experiences that led them into homelessness. This program is a key part of preventing & ending youth homelessness in our community.

We are pleased to further align our program with best practices in youth focused service delivery to provide the best experience possible for the young people we serve. The construction will take an estimated ten months to complete, and we hope to wrap up the project by Spring 2023.

Wyndham House would like to thank the Government of Canada and the Government of Ontario for their support through the Canada-Ontario Community Housing initiative. We would also like to thank the County of Wellington Housing Services, The City of Guelph, Canada Mortgage and Housing Corporation, The United Way of Guelph Wellington Dufferin/The Home for Good Campaign, TD Bank, The Home Depot Canada Foundation, DENSO and all Donors who have donated and continue to donate to support this build to help close the construction funding gap.



Let's open the front door together!

We will be hosting a "Bellevue Open House" Event in Spring 2023 and hope to see you there.



To learn how you can join in and or make a donation to #endyouthhomelessness, please contact admin@wyndhamhouse.org

Here are ways you can help:

UPCOMING WYNDHAM HOUSE EVENTS



Cabin Casual Wool Socks, \$10 per pair

Pre-Order: September 2022

Pick Up: November 2022

Sponsored by: Aaron Zuccala

**WE'RE
HIRING!**

Come work with us at Wyndham House!

We're hiring three positions.

- Youth Support Workers (Full-time, overnight)
- Youth Support Worker (Wednesday-Saturday 11pm-9am)

Requirement:

- Must have access to a reliable vehicle

Interested applicants are encouraged to submit a letter of interest to admin@wyndhamhouse.org. Join our awesome team!

**Looking to get involved in
your community?**

Top 10 SUMMER WISH LIST

1. Hygiene Items (shampoo, body wash, deodorant, hairbrushes, toothpaste)
2. Men's & Women's Underwear
3. Backpacks
4. Sleepwear + Fleece
5. Pillows + Blankets
6. Dish Set for 4
7. Kitchen Items
8. Recreational Items (basketballs, games, puzzles, art supplies)
9. Shower Towels
10. Gift & Food Cards

**Discover the benefits
of volunteering!
APPLY ONLINE NOW
[wyndhamhouse.org/
volunteer](http://wyndhamhouse.org/volunteer)**

Across Canada, up to
40,000 youth are homeless
with 6,000 seeking a safe
place to be sheltered
tonight.



Your donation can help us end youth homelessness.

IF/WE WOULD LIKE TO PROVIDE A SAFE HOME AND SERVICES FOR YOUTH AT WYNDHAM HOUSE.

- ☐ **\$10** Purchase a pair of socks to support "Socks for Shelter" campaign
- ☐ **\$25** Your gift provides an Emergency Food Hamper from our Youth Hub
- ☐ **\$50** Your gift provides a night's sleep at our Youth Emergency Shelter
- ☐ **\$100** Your gift provides a "Blanket our Youth" Bedding Kit
- ☐ **\$250** Your gift provides 1 day of meals to 32 youth across all Housing Programs
- ☐ _____ Set-up monthly giving to support at-risk youth ongoing
- ☐ _____ Provide this one-time donation
- ☐ _____ Donate In-Kind: hygiene kits, new bedding, new clothing, backpacks, gift cards

Full Name: _____ Credit Card #: _____
Phone Number: _____ Expiry Date: _____ CVC: _____
Email Address: _____ Signature: _____
Full Address: _____

Please return form with cheque (*payable to Wyndham House*) or credit card information to:
P.O. Box 1898, STN. MAIN, GUELPH, ON N1H 7A1 • CRA# 11930 5217 RR001