

SUMMER 2021

WORKING TO PREVENT, REDUCE AND END YOUTH HOMELESSNESS



OUR PHILOSOPHY

At Wyndham House, we understand that housing means far more than a roof overhead or a place to eat a meal. For us, it means a space where youth are empowered to develop skills, make impactful decisions, contribute to their community, forge their identity and ultimately reach their full potential.

To foster this philosophy, Wyndham House offers a variety of programs that ensure all youth, regardless of where they are at in life, are given the opportunity to make healthy decisions and bring greater stability to their lives.

WHAT IS YOUTH HOMELESSNESS DIVERSION?

Youth homelessness diversion or 'shelter diversion' is a strategy that redirects youth to alternate temporary housing options and connects them with services and supports to prevent youth from staying in emergency shelter. The goal of diversion is to help youth transition to stability and prevent the cycle of homelessness.

DIVERSION CONVERSATIONS IDENTIFY:

1. Immediate dangers
2. Housing history
3. Connections to other services
4. Natural Supports
5. A plan of action

From the President & Executive Director

By all accounts, this past year has been one of contrasts. As we moved through the year continuing to work to meet the direct impacts of the Pandemic head on while keeping all our programs and services running, we remained focused on providing effective services to youth who need housing and health supports and all the while we are remaining firmly focused on our goal of prevention-based work. Throughout this past year, Wyndham House made significant progress in moving towards prevention-based models of intervention. These changes included the development of a new youth "Diversion Tool" that is now being implemented in other communities, training shelter staff and community partners in diversion protocols and creating a "housing hub" in the basement of 18 Norwich St E to support clients entering the shelter system to engage in housing-focused work.

Through our efforts in diversion, in concert with wrap-around housing supports we have achieved a 42% reduction in chronic youth homelessness in the past year and since 2018 we have had an amazing 78% reduction in youth homelessness.

As we look towards the coming year, we anticipate that this could be the year where we end chronic youth homelessness in Guelph-Wellington. To realize this goal, we are setting our sights on providing direct access to health and mental health care for youth with concurrent disorders. In partnership with other youth-serving organizations, Wyndham House has developed a Concurrent Services for Youth Hub (CSY-Hub) model that will provide low-barrier, complex capable care to young people presenting with co-occurring mental health and substance-related needs. We have aligned this work with the work of the Guelph-Wellington Drug Strategy, Guelph and Area Ontario Health Team and the Integrated Youth Service Network to build a service model that enhances service pathways and promotes health equity. These past 18 months has proven to us time and time again that the journey to promoting health equity for our client population is one of the last steps to ending chronic youth homelessness in our community.

A challenging year to be sure but in many ways a year for gratitude. We could not have made it through the year without the ongoing hard work of all our staff. We need to thank everyone in our agency for putting aside their own worries, exhaustion & pandemic fatigue and who just simply showed up and did their jobs in the face of a global health crisis, on top of an existing opioid crisis and a housing crisis. Gratitude for our community partners and funders who helped us meet our new programming and financial pressures and for our community volunteers who found great ways to continue to support the work. The year was tough at times for sure, but our staff and supporters showed courage, resiliency, even some humour and a whole lot of commitment and dedication and for that we thank them all.

Respectfully,

Debbie Bentley-Lauzon
EXECUTIVE DIRECTOR

Rita Isley
BOARD PRESIDENT

Funder Support

A sincere thank you to all our funders and supporters. We would like to especially thank the following agencies and organizations for their generous, long-term support.

Wellington County Social Services
United Way Guelph Wellington Dufferin
Ministry Of Children; Community And Social Services
The Home Depot Canada Foundation

City Of Guelph
Guelph Community Foundation
Ontario Trillium Foundation

MAILING ADDRESS: P.O. BOX 1898 STN. MAIN GUELPH, ON N1H 7A1



YOUTH EMERGENCY SHELTER: 18 NORWICH STREET EAST (519) 837-3892 GUELPH, ON



(519) 822-4400



info@wyndhamhouse.org



wyndhamhouse.org



@Wyndhamhouseguelph



@Wyndhamhouseguelph



@GuelphWyndhamHouse

Why we support Wyndham House

Our Community in Action



Lakeside Church

Thank you to Lakeside Church for your Holiday Campaign to raise awareness to youth homelessness in Guelph and your incredible financial generosity. Words cannot express how grateful we are to have received such tremendous support from all staff and members. From donating bed sheets, a set of dishes, blankets and towels... you have made our youth feel welcomed, warm and safe as they transition into independent living.



Spero Foundation Raffle

Thank you Spero Foundation UOG for organizing a online raffle fundraiser to purchase Personal Care Kits for our youth.



"Baking Their Day"

Thank you to Jessica's Neighbourhood Volunteer Baking Team for "Baking Their Day" and delivering homemade treats to all youth across our 3 housing sites.



Outlet Collective Art Bundles

21 inspiring art bundles were collected, assembled and packaged for our youth to participate in 6 different kinds of art activities this summer. Thank you Outlet Collective for your kind and thoughtful donation.



The Guelph & District Association of REALTORS

Special Thanks to all Realtors and Mayor Cam Guthrie for your dedication to ending youth homelessness in Guelph. What an amazing #realtorscare campaign and we so appreciate your generous donation and continued support.



Victory Public School – Best School Spirit!

Thank you to all students, staff and parents for supporting our youth with your #12DaysofGiving event. By providing the gift of a new journal, a good book, personal care & food items our residents kept busy, calm and relaxed as they stayed safe indoors.



Birthday Angels – Birthday's made extra special!

For the past two years, Birthday Angels has provided the cake mix and icing, party decorations, loot bags for all residents, and a gift for the birthday person! We all just love party day! Thank you for always making our youth feel special on their big day. #spreadhappy

Pat has a new place to call home! Pat moved into our Suffolk Supportive Housing program in May 2021. They were struggling emotionally, physically, behaviourally, and engaged in a lot of substance use thus a simple housing placement could not meet their complex needs. With the current housing placement falling apart, Pat connected with our Diversion worker and was given a spot in one of our long term supportive housing sites.

Through this placement, Pat was able to gain stabilize in many ways and was connected to supports that helped them with substance use, and other challenges. During the time Wyndham House, Pat participated in various programming that focused on critical life and

social skills. Through case management, Pat has been able to continue to use these supports and reconnect with family and gain a better relationship with them! With our support and Pat's hard work, they now have an opportunity to live independently in a residential program that is more appropriate for Pat's developmental needs long term.

Pat will remain connected to our housing stability staff during the transition period to help with any difficulties and help Pat utilize the skills learned while staying at Wyndham House. This, in return, will help to prevent Pat from re-entering into homelessness once more.

Thank you to our Supporters:

Rotary Clubs of Guelph, MAZON Canada, Food Rescue, Guelph Lions Club, Sutherland Insurance, Alectra Utilities, John Ingram, Doug Dane Consulting, Guelph Master Gardeners, Guelph Box, The Progress Report, Lost Aviator Coffee, T. Beattie Holdings, St. John's-Kilmarnock School, Ben Thiessen Corporation, Ian Thompson, Royal City Tree Care, Guelph Busy Bakers, University of Guelph, Part Time CFO Services, MealCare Guelph, Guelph Red Chevrons.

Thank you to all Supporters, Monthly Donors and Donation Donors In-Kind.



EVERY
YOUTH COUNTS
#endyouthhomelessness

Want to make a difference and help us
#endyouthhomelessness in our community?
Join in, make a purchase, tag & share.

***NEW!**



\$30 Bistro Mug +
Lost Aviator Coffee Sampler



\$35 Water Bottle (22oz)

\$35 Classic Tumbler (17oz) +
Lost Aviator Coffee Sampler



\$20 Ladies & Men's
Soft Style Tee (S-XXL)



ORDER ONLINE TODAY: www.wyndhamhouse.org

Thank you to our local sponsor:



100% of Every Youth Counts sales will support our Youth Focused Supportive Housing Programs.
Thank you for your support. TAG: #wyndhamhouseguelph #endyouthhomelessness #everyyouthcounts

(519) 822-4400 #206 kim@wyndhamhouse.org

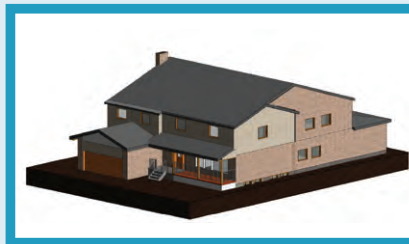
The Bellevue Project - We're Renovating!



The Bellevue Project, located on Bellevue Street, will be renovated to include 8 independent POD living spaces (bachelor-type units), shared common space and a large communal kitchen. The new building will also have open communal areas for meals, recreation, celebrations & holidays as well as thoughtfully designed spaces for health care, 1:1 meetings and staff rooms. Support services, such as case management supports, mental health services and life skills acquisition will be available on-site 24 hours-a-day, seven days-a-week.



Our goal at Wyndham House is always to prevent youth from entering the shelter system if at all possible. That may mean diversion via family reunification, a stay at a friend's home with added supports and when those options are not available we need an effective place for transitional aged youth to Call Home. Through this renovation, we will effectively shift our current model away from the old "group home" and congregant setting to provide a much needed and innovative supportive housing model for youth age 16 – 25 years. Each youth will now truly have a private space to call their own.



Wyndham House would like to thank the Government of Canada and the Government of Ontario for their support through the Canada-Ontario Community Housing Initiative. We would also like to thank The County for the tremendous level of support and also extend our sincere thanks to DENSO and TD Bank for joining in as Build Partners.



This Youth Centered Supportive Housing Project is an acknowledged key piece of the puzzle for eliminating homelessness within our community by 2023. Everyone deserves a safe and affordable place to call home. Stay tuned for updates.

To learn how you can join in and or make a donation to #endyouthhomelessness, please contact info@wyndhamhouse.org

Here are ways you can help:

UPCOMING WYNDHAM HOUSE EVENTS



A Little Bit
COUNTRY

RE-SCHEDULED DATE: Spring 2022

TICKETS: \$ 50.00 per person

Sponsorships Available, Auction Gifts gladly accepted.

Join our Event Planning Committee!



BAKE/COOK THEIR DAY!



Calling all bakers & chefs!

We're looking for **VOLUNTEERS** willing to bake/cook a special treat for Wyndham House youth.



Interested? email: kim@wyndhamhouse.org

Thank you to all Volunteer Home based Bakers/Chefs who have donated a tasty treat and or a homemade meal since April!

Follow us: @baketheirdaywh

Wyndham House Youth SUMMER WISH LIST

Bed In A Bag (Double)

Men's & Women's Shorts/Tees

Men's & Women's Underwear

Pillows + Cases

Study Desks (Small)

Gift & Food Cards

Double Sheets

Towels

Backpacks

Set of Dishes

Bus Passes

HOW TO HELP:



kim@wyndhamhouse.org

Donate online www.wyndhamhouse.org

EACH NIGHT ACROSS CANADA,
MORE THAN **6500 YOUTH**
ARE **WITHOUT** A PLACE
TO CALL **HOME.**



Your donation can help us #endyouthhomelessness.

I/WE WOULD LIKE TO PROVIDE A SAFE HOME AND SERVICES FOR HOMELESS YOUTH AT WYNDHAM HOUSE.

- ☐ **\$25** Your gift provides 1 Youth with a personal care kit.
- ☐ **\$50** Your gift provides 1 Youth with a night's sleep in the shelter.
- ☐ **\$100** Your gift supports the Bellevue Supportive Housing Expansion Project.
- ☐ **\$250** Your gift provides one day of meals across all Housing sites.
- ☐ _____ Set-up Monthly Giving to support at-risk youth ongoing.
- ☐ _____ Provide this one-time donation.

Donations of \$100 or more will receive a complimentary 'Every Youth Counts' T-shirt!

Full Name: _____ Credit Card #: _____

Phone Number: _____ Expiry Date: _____ CVC: _____

Email Address: _____ Signature: _____

Full Address: _____

Please return form with cheque (*payable to Wyndham House*) or credit card information to:
P.O. Box 1898, STN. MAIN, GUELPH, ON N1H 7A1 • CRA# 11930 5217 RR001